

CASCADE CARE INSTRUCTIONS -

Proper sliding window maintenance



CASCADE
W I N D O W S

CALL CASCADE CARES AT 800.442.8544

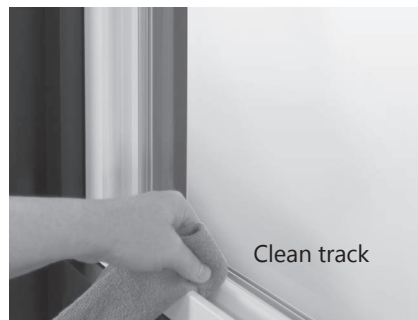
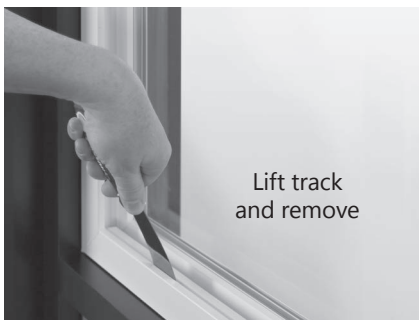
Step 1

Take a look at the window diagram to get familiar with the window terminology. The first step is to locate the sash and slide fully open. Slide sash over to the open position, lift up and pull the bottom towards you. You may notice that moisture and debris are present in the window track...this is normal occurrence.



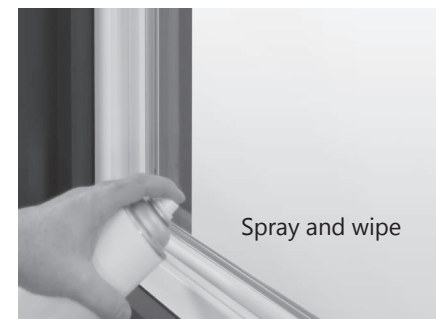
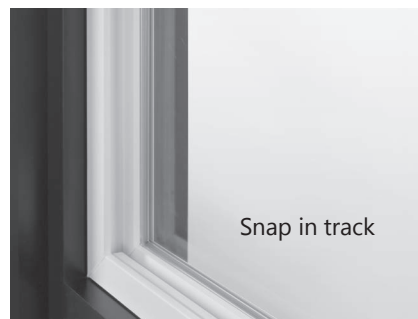
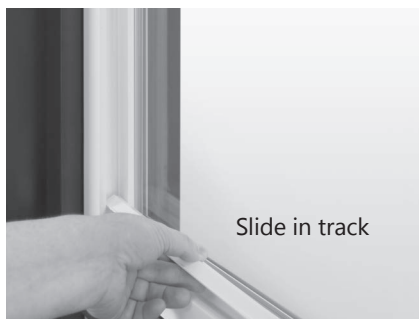
Step 2

Using a putty knife, pry the track out between the track and frame. Clean the track using a non-abrasive cloth on both sides with soap and water.



Step 3

To reinstall, slide the track in the groove sloping away from you and press down. The track will need to be snapped into place. Once installed into place you can spray the track with dry silicone or Lemon Pledge to assist the sash along the track.



SAFETY - With any maintenance, please make sure you take the appropriate safety precautions while performing these task.

Step 4

To reinstall, repeat steps #1. For cleaning the weep system refer to: Check weep system drainage instructions.



SLIDER WINDOW

DO NOT REMOVE

Serial # 2197155.003
01.011917.14.10 0.27

Mainframe

Interior View



Jam

TOOLS REQUIRED

Putty knife



Mild soap



Dry silicone spray



Skill level



Video link